



REMOTEIQ™ RAIL CLOUD-BASED ANALYTICS



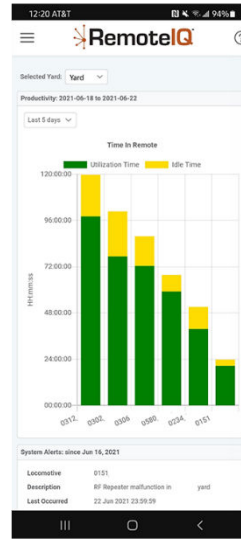
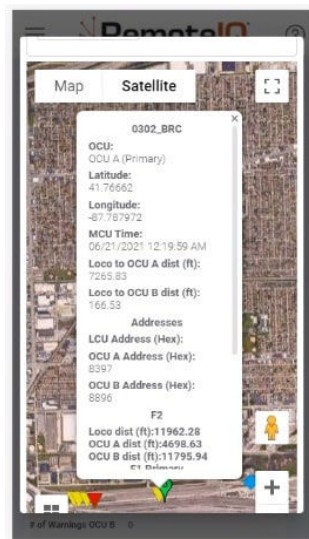
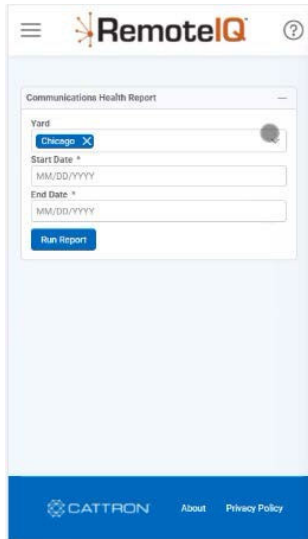
HIGHLIGHTS

- Increase rail productivity, safety and profitability with monitoring and analytics software
- Enable monitoring of yard operation trends and oversee asset health with reporting, alerts and tracking features
- Provide information when and where you need it to proactively keep your assets and personnel safe and productive
- Early notification of equipment issues and provides complete troubleshooting and technical support via a 24/7 helpdesk
- Manage maintenance strategies and maximize performance with minimal operating risk while keeping assets running at maximum capacity
- Responsive UI creates a mobile-friendly experience
- Provides an instant snapshot of yard conditions
- Compatible with the LCS-III, LCS-QC, Accuspeed™, Beltpack™ and Transport™ VS systems and the Smart Repeater

FEATURES

- Monitor data and alerts sent over the secure website
- Up-to-date detailed reports on operational usage
- Directly connect to locomotives and view live output from the dashboard
- Analyze equipment usage and misuse before damage occurs
- Review operations metrics over time to identify areas needing improvement
- Monitor operator behavior and equipment settings
- Send alerts to on-site supervisors for quick technical support
- Event-based alerts are sent when problems are identified through email and are tracked
- Reports provide information on wheel slip, speed violations, communication health, OCU metrics and emergency brake incidents
- Integration with Google Maps for interactive map functionality for reporting
- Customizable permissions ensure a dynamic experience based on user roles





Above: New mobile-friendly interface. Communication health report, railyard tracking and productivity.
Below: Last known OCU location report, RCL and OCU map tracking and emergency brake report.

