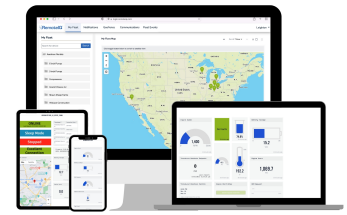


RemotelQ™

REMOTE MONITORING AND CONTROL

TURNKEY SENSOR-TO-CLOUD SOLUTIONS

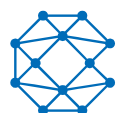
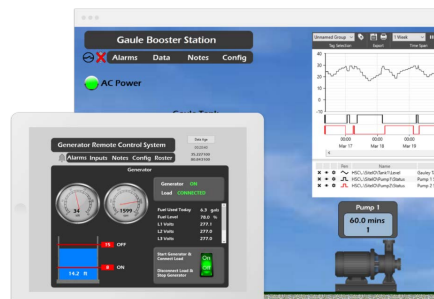
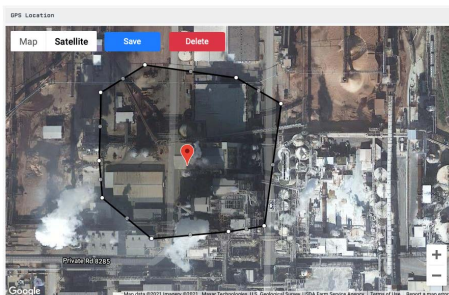


HIGHLIGHTS

- The RemotelQ™ platform enables complete, easy to deploy remote monitoring and control solutions
- Mobile dashboards allow seamless monitoring and control of your remote assets such as pump stations, plants, compressor stations, diesel engines, generators, flow meters and more
- Manage and locate your equipment remotely with mobile devices, tablets and notebooks from any location
- Increase efficiency, reduce costs and automate regulatory compliance workflows
- Designed to provide users with vital operational data in real-time from their remote assets and equipment
- Smart technology reduces service costs, improves machine uptime, and helps businesses maintain regulatory compliance
- Available by subscription bundled with wireless airtime. We can also provide customized solutions tailored to meet your requirements, as well as private labeling
- Critical event notifications via text, voice and email, coupled with the ability to diagnose problems remotely, allowing users to be proactive in managing remote sites and minimizing downtime in the field
- Reduce labor, vehicle and fuel costs with less site visits
- 24/7 automated remote monitoring provides for accurate and more reliable data and computations with less room for human error delivering superior site data
- Intuitive graphical display and real-time site data providing a quick glance as to status of the remote site(s) optimizing the ability to make operational and field level decisions

FEATURES

- Critical Alarms and Events - receive and acknowledge alarms via texts, voice and email
- Cloud-based Monitoring and Control – no IT infrastructure, licensing or third party integration required and is accessible from any network connected device
- Configurable – user-defined site data displayed in textual format and on graphics page
- Controls – on-demand ability to remotely turn equipment on/off when needed
- Dashboards – user-friendly graphical displays and data
- Open Platform – supports equipment from most manufacturers
- Mobile – receive alarms, view current and historical data and control equipment remotely from anywhere via mobile device, tablet or desktop interface
- Secure – data transmission, access and storage are locked down from end to end
- Support – customer training and support spanning software and hardware option
- Wireless – cellular data transmission is included, no separate accounts or hardware needed
- Reliable – RemotelQ is a proven monitoring supplier with over 20 years of satisfied customers





DATA PLANS	Tracking	Standard	Premier
	GPS Asset Tracking	Standard Remote Monitoring & Control	Advanced Remote Monitoring, Control & Configuration
GPS tracking and locating	●	●	●
Geofencing: draw virtual map boundaries for asset movement alerts	●	●	●
Alarm notifications and acknowledgments via text, email and voice	●	●	●
User-configurable rosters for alarm recipients	●	●	●
Mobile access to the units to view status of inputs and data from any smartphone, tablet or PC	●	●	●
Historical alarm report with complete audit trail	●	●	●
User-defined profiles for all individuals with access to the RemotelQ website	●	●	●
Data export	●	●	●
Graphical user interface of monitored conditions (i.e. pumps, tanks, generator, level, flow, discharge pressure, floats, etc.)	●	●	●
Remote control of relay outputs (requires user secure access)		●	●
Tabular presentation of monitored conditions		●	●
Flowmeter support for digital (pulse) and analog inputs		●	●
Real-time status of inputs (i.e. level, flow, pump run-times/cycles, pump differentials, alarms, etc.)		●	●
Reporting of inflow/outflow, volumes and rates		●	●
Graphing and trending of all monitored data points		●	●
Rainfall gauge support		●	●
Tank and well support (monitoring and controls)		●	●
Pump, engine and generator control		●	●
Incident-based image capture (RemotelQ Vision)		●	●
Remote device and controller configuration and programming			●